

45/0 Spectrophotometer



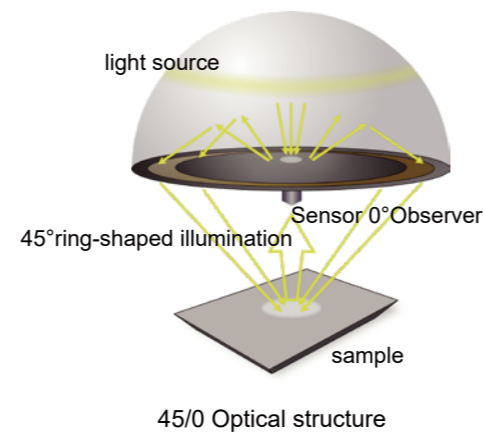
CS-600C/600CG

Instrument Features

45/0 spectrophotometer adopt 45/0 geometry, directional dependence is eliminated, regardless of changing the sample position, tilting sample or rotating instrument can achieve high accuracy and repeatability.

Instrument Advantages

- Measurement Management Software
- Every instrument comes with verification certification
- Top-port aperture makes it much simpler to measure solid, pellet, powder, pasty material and others
- 60 Degree Gloss Measurement
- Conform to CIE,ISO,ASTM,DIN standard for color and gloss measurement
- Instrument can connect with PC by USB cable.

Application Examples

Plastic and Rubber



Automobile Decoration



Road Signs



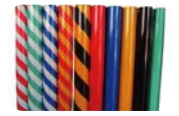
Plastic floor



PET film



Screen film



Reflective film

Coating



Color Steel Plate



Home Decoration



Coil Coatings

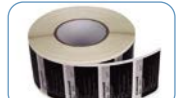
Print



Plastic package



Magazine



Label

Technical Data

Model	CS-600C	CS-600CG
Function	color	color and gloss
Geometry	45/0 (45 ring-shaped illumination, 0 degree viewing)	
Aperture	11mm	
Wavelength	400-700nm	
Wavelength Interval	10nm	
Sensor	high sensitivity silicon photodiode	
Light Source	LED	
Repeatability	Reflectance: standard deviation within 0.08% Chromaticity value: ΔE^*ab 0.03 (when a white plate is measured 30 times at 5 second intervals after white calibration), Maximum 0.05	
Inter Instrument Agreement	0.2 ΔE^*ab (BCRA II color tiles, average test value of 12 tiles)	
Language	Chinese and English	
Observer	2°/ 10°	
Illuminants	A,C,D50,D55,D65,D75,F1~F12,CWF,U30,DLF,NBF,TL83,TL84,U35	
Color Spaces	CIE-L*a*b,L*C*h,L*u*v,XYZ,Yxy, Reflectance,Hunter-lab,Munsell MI,CMYK	
Indices	WI(ASTM E313-00,ASTM E313-73,CIE/ISO,AATCC,Hunter,Taube Berger Stensby),YI(ASTM D1925,ASTM E313-00,ASTM E313-73),Tint(ASTM E313,CIE,Ganz),Metamerism index Milm, Stick color fastness, Color fastness,ISO brightness, A density, T density, M density, E density	
Color Difference	$\Delta E^*ab, \Delta E^*CH, \Delta E^*uv, \Delta E^*cmc(2:1), \Delta E^*cmc(1:1), \Delta E^*94, \Delta E^*00, \Delta Eab$ (Hunter), 555 shade sort	
Gloss Test Angle	60°	
Test Area	5x10 mm	
Test Range	0-1000 GU	
Repeatability	0.2 GU(0-100GU)	0.2%(100-1000GU)
Reproducibility	1.0 GU(0-100GU)	1.0%(100-1000GU)
Light Source Life Time	10 years 3million test	
Screen	2.8 inch color screen	
Data Storage	20000 samples	
Interface	USB	
Power	Rechargeable Lithium Battery, 20000 continuous tests, 7.4V/600mAh	
Working Temperature	0-45°C relative humidity 80% or less (at 35°C) with no condensation	
Size	181*73*112mm(L*W*H)	
Weight	about 800g (without battery)	
Standard accessories	Adapter, Lithium Battery, operate manual, color QC software, driver software, USB cable, Calibration tile (Black and white) Gloss calibration tile	