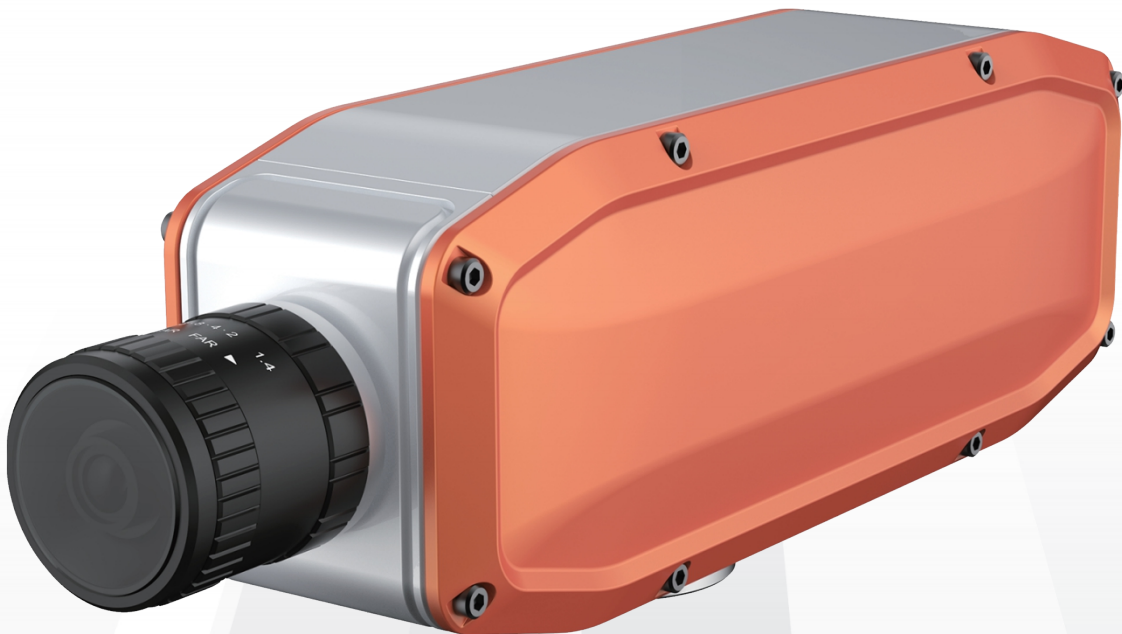
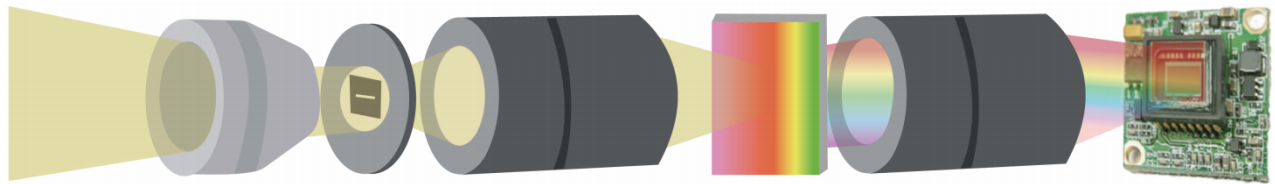


# FIGSPEC FS series Hyperspectral Camera



- Machine vision, color measurement, visible light / near-infrared detection hyperspectral solution
- Spectral range: 400-700nm/400-1000nm, spectral sampling/pixel 2.5nm, max 1.5nm (Change the slit size for higher spectral resolution, but will affect signal strength)
- Imaging speed: Full Spectral range 128Hz, 3300Hz after ROI
- Support multi-region ROI
- Color difference test : print, textile and other industries surface color test, texture detection, with special light source and control system, the repeatability of single pixel of color measurement can reach  $dE^*ab < 0.1$

## Working Principle



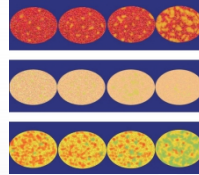
## Application



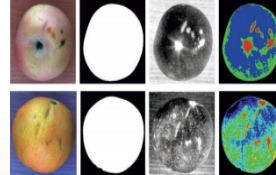
Printing Products



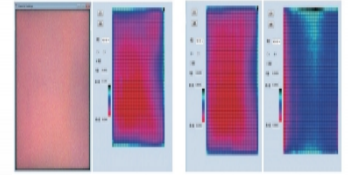
Textile Products



Pharmaceutical  
Composition Analysis



Fruit and  
Vegetable Sorting



Screen

## Technical Parameter

Model	FS-10	FS-11	FS-12	FS-13
Illuminant	Passive (without illuminant inside device)			
Spectroscopic method	Grating spectroscopy			
Wavelength Range	400-700nm		400-1000nm	
Spectral bands	150		300	
Spectral sampling/pixel		2.5nm		
Slit width		30um		
Transmission Efficiency	> 50%		> 60%	
Stray light		< 0.5%		
Spatial Samples	Max. 1920 (set from software)			
Pixel Size	5.86um			
Imaging speed	Full Spectral range 41Hz,390Hz after ROI	Full Spectral range 128Hz,3300Hz after ROI	Full Spectral range 41Hz,390Hz after ROI	Full Spectral range 128Hz,3300Hz after ROI
Detector	CMOS			
SNR(Peak)	600/1			
Camera Output	USB3.0			
Interface	C-Mount			
Accessory	USB3.0 cable			
ROI	Single Band	Freely selectable multiple bands	Single Band	Freely selectable multiple bands